

target : Uranus  
 target radius (km) : 25559.00  
 C/A epoch : 2027-11-04T09:28:48.280  
 Event type : XRT  
 : No Uranus occs  
 : Ring occs: topocentric, not geocentric  
 Gaia source ID : 145389217112762112  
 2Mass ID (if available) : 04272653+2138251

ICRS Star Coord at Epoch: 04h 27m 26.53741s +21:38:25.09491s

RUWE (>1.4 is poor) : 0.98  
 K magnitude : 14.901  
 G magnitude : 17.494  
 RP magnitude : 16.684  
 BP magnitude : 18.213  
 DUPflag : 0  
 Distance (au) : 18.481  
 f0 (km) : 0.000  
 g0 (km) : 0.000  
 skyplane vel. (km/s) : -20.17  
 Sun-Target sep (deg) : 152.77  
 Sun-Moon sep (deg) : 138.25  
 B (ring opening deg) : 78.17  
 PA of pole (deg) : -58.64

# a(km) ring

- 1 41837.2 6
- 2 42235.0 5
- 3 42571.2 4
- 4 44718.5 alpha
- 5 45661.1 beta
- 6 47176.1 eta
- 7 47626.3 gamma
- 8 48300.3 delta
- 9 50026.7 lambda
- 10 51149.4 epsilon

Observable events with sun below -5 deg and altitude above 5 deg unblocked by planet

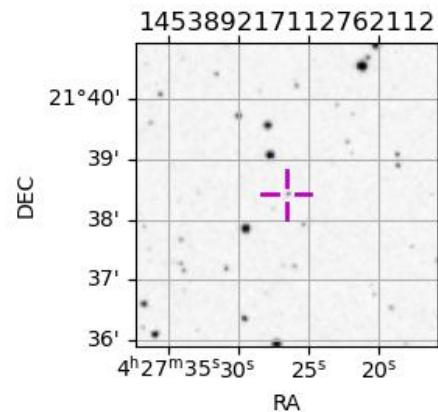
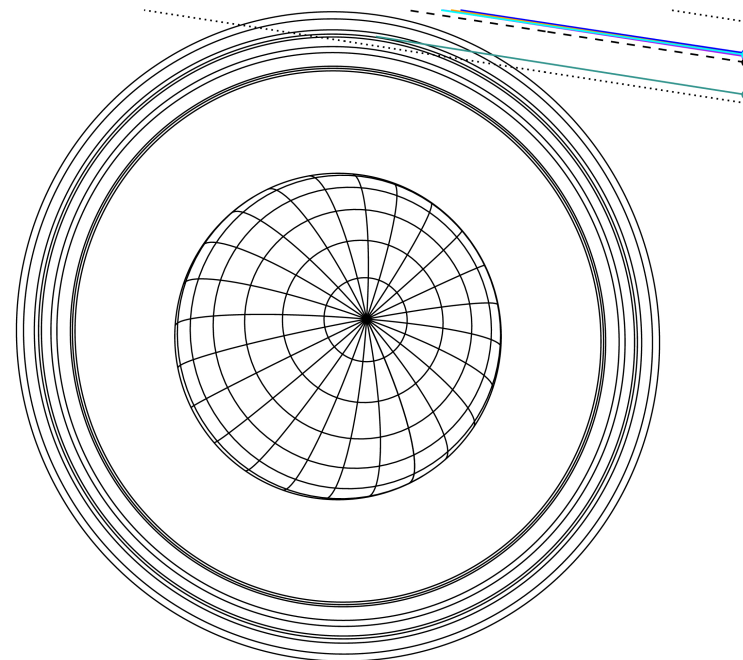
Obs	Location	lat	Elon	Rings I	Planet	Rings E	Observed Events Interval	OEcode
PIC	Pic du Midi	42.9	0.1					PnnRnn
PAL	Palomar Mt (200")	33.4	243.1					PnnRnn
PMO	Purple Mtn Obs. Nanki	32.1	118.8					PnnRnn
KPNO	Kitt Peak Natl Obs	32.0	248.4					PnnRnn
MCD	McDonald Obs. 2.7m	30.7	256.0					PnnRnn
TEN	Teide Obs./Tenerife	28.3	343.5					PnnRnn
IRTF	Mauna Kea/IRTF	19.8	204.5					PnnRnn
KAV	Kavalur Observatory	12.6	78.8					PnnRnn
RIO	Rio de Janeiro	-22.9	316.8					PnnRnn
ESO	European Southern Obs	-29.3	289.3	+++			NOV 04 09:11 - NOV 04 09:20	PnnRin
AAT	Siding Spring (AAT)	-31.3	149.1					PnnRnn
SAAO	So. Afr. Astro. Obs.	-32.4	20.8					PnnRnn
MSO	Mt. Stromlo Observato	-35.3	149.0					PnnRnn



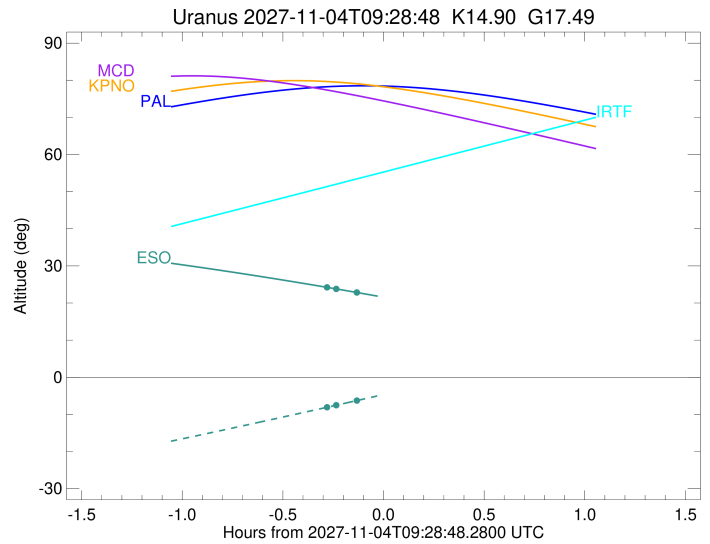
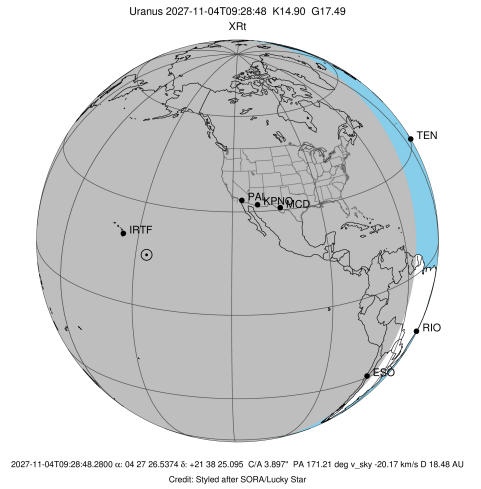
2027-11-04T09:28:48.2800 ra: 04 27 26.5374 s: +21 38 25.095 C/A 3.897'' PA 171.21 deg v\_sky -20.17 km/s D 18.48 AU  
 Credit: Styled after SORA/Lucky Star

Uranus 2027-11-04T09:28:48 K14.90 G17.49 XRT

Earth  
 PAL  
 KPNO  
 MCD  
 IRTF  
 ESO



target : Uranus  
 target radius (km) : 25559.00  
 C/A epoch : 2027-11-04T09:25:53.240  
 Event type : XRt  
 : No Uranus occs  
 : Ring occs: topocentric, not geocentric  
 Observer code : ESO  
 Location : European Southern Obs. (3.6m)  
 Latitude (deg) : -29.26097  
 E. Longitude (deg) : 289.26831  
 Altitude (km) : 2.400  
 Gaia source ID : 145389217112762112  
 2Mass ID (if available) : 04272653+2138251  
 ICRS Star Coord at Epoch: 04h 27m 26.53741s +21:38:25.09491s  
 RUWE (>1.4 is poor) : 0.98  
 K magnitude : 14.901  
 G magnitude : 17.494  
 RP magnitude : 16.684  
 BP magnitude : 18.213  
 DUPflag : 0  
 Distance (au) : 18.481  
 f0 (km) : 0.000  
 g0 (km) : 0.000  
 skyplane vel. (km/s) : -20.17  
 Sun-Target sep (deg) : 152.77  
 Sun-Moon sep (deg) : 138.13  
 B (ring opening deg) : 78.17  
 PA of pole (deg) : -58.64  
 Pole direction: RA (deg): 257.31100  
 Dec (deg): -15.17500  
 C/A sky separation (") : 3.531  
 C/A sky separation (km) : 47328.1  
 NAIF SPICE kernels : RAJobs\_U111+rgf15.spk  
 URKALLvl.spk  
 ura111.bsp  
 IAU\_URANUS\_for\_RINGFIT.tpc  
 vgr2.ura111.bsp  
 ura161.bsp  
 vgr2.ura161.bsp  
 peph.ura160.bsp  
 earthstns\_itr93\_040916.bsp  
 earth\_720101\_070426.bpc  
 earth\_200101\_990628\_predict.bpc  
 pg3f0000r.bsp  
 pg490000r.bsp  
 naif0012.tls  
 earth\_flat\_IAU.spk



Ring	I/E	UTC	b?	alt	alt-sun	radius	r-dot	lat-geo	lat-geodetic
epsilon	I	2027-11-04T09:11:06.580		24.35	-8.25	51553.86	-7.79		
lambda	I	2027-11-04T09:14:44.843		23.79	-7.52	50026.71	-6.16		
delta	I	2027-11-04T09:20:56.312		22.82	-6.26	48300.35	-3.08		

No planet occultations

delta	E	2027-11-04T09:32:27.880		20.97	-3.91x	48300.35	3.08		
lambda	E	2027-11-04T09:38:39.693		19.95	-2.63x	50026.71	6.16		
epsilon	E	2027-11-04T09:42:00.452		19.39	-1.94x	51416.15	7.78		