

target : Uranus
 target radius (km) : 25559.00
 C/A epoch : 2030-10-31T13:48:02.110
 Event type : XRT
 : No Uranus occs
 : Ring occs: topocentric, not geocentric
 Gaia source ID : 3416310553102889856
 2Mass ID (if available) : 05250674+2316514

ICRS Star Coord at Epoch: 05h 25m 06.78372s +23:16:51.72838s

RUWE (>1.4 is poor) : 1.85
 K magnitude : 12.272
 G magnitude : 15.854
 RP magnitude : 14.804
 BP magnitude : 16.960
 DUPflag : 0
 Distance (au) : 18.439
 f0 (km) : 0.000
 g0 (km) : 0.000
 skyplane vel. (km/s) : -15.02
 Sun-Target sep (deg) : 135.76
 Sun-Moon sep (deg) : 159.07
 B (ring opening deg) : 81.07
 PA of pole (deg) : 25.48

a(km) ring

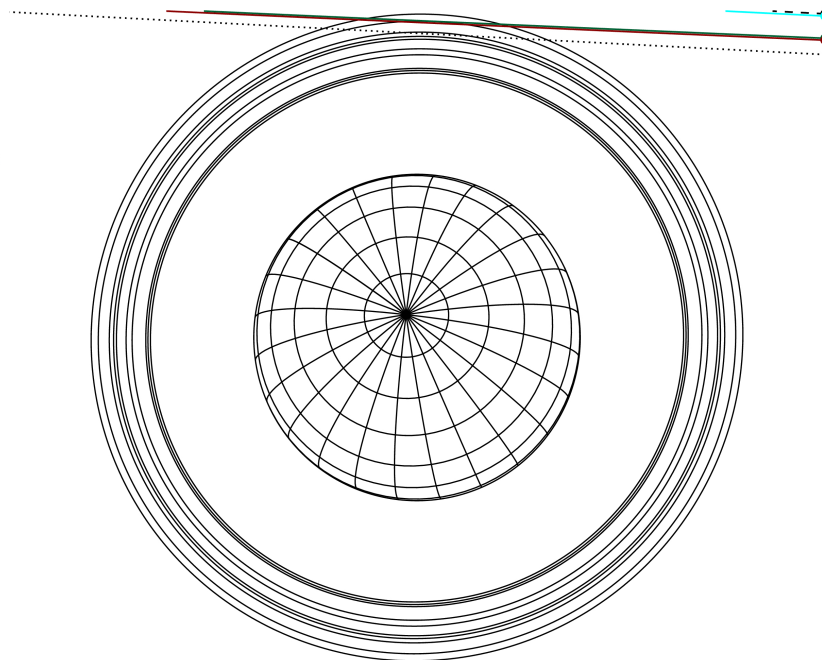
- 1 41837.2 6
- 2 42235.0 5
- 3 42571.2 4
- 4 44718.5 alpha
- 5 45661.1 beta
- 6 47176.1 eta
- 7 47626.3 gamma
- 8 48300.3 delta
- 9 50026.7 lambda
- 10 51149.4 epsilon



2030-10-31T13:48:02.1100 cc: 05 25 06.7837 s: +23 16 51.728 C/A 4.041" PA 177.01 deg v_sky -15.02 km/s D 18.44 AU
 Credit: Styled after SORA/Lucky Star

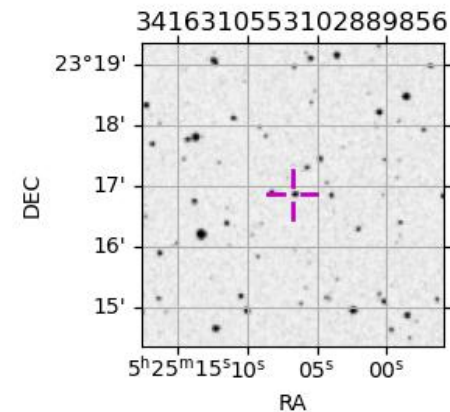
Earth
 IRTF
 AAT
 MSO

Uranus 2030-10-31T13:48:02 K12.27 G15.85 XRT



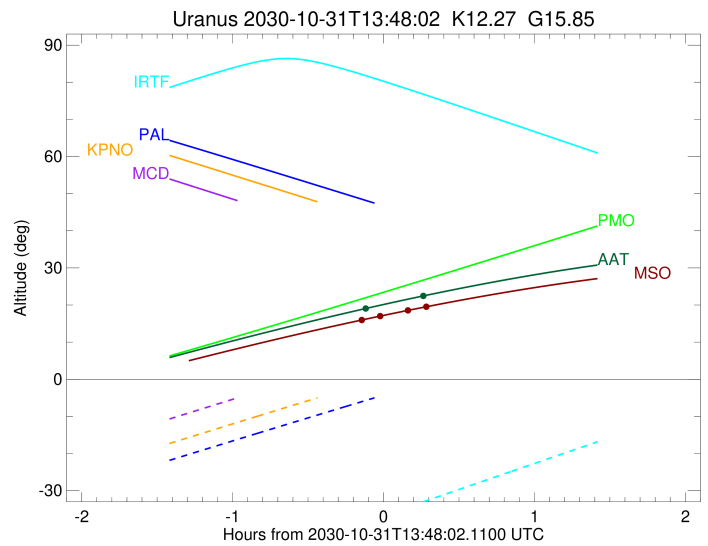
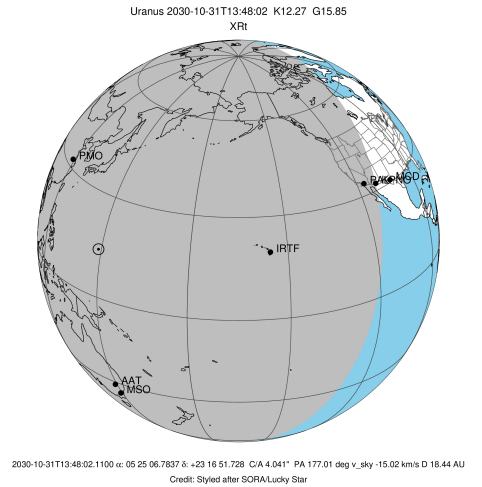
Observable events with sun below -5 deg and altitude above 5 deg unblocked by planet

Obs	Location	lat	Elon	Rings I	Planet	Rings E	Observed Events Interval	OEncode
PIC	Pic du Midi	42.9	0.1					PnnRnn
PAL	Palomar Mt (200")	33.4	243.1					PnnRnn
PMO	Purple Mtn Obs. Nanki	32.1	118.8					PnnRnn
KPNO	Kitt Peak Natl Obs	32.0	248.4					PnnRnn
MCD	McDonald Obs. 2.7m	30.7	256.0					PnnRnn
TEN	Teide Obs./Tenerife	28.3	343.5					PnnRnn
IRTF	Mauna Kea/IRTF	19.8	204.5					PnnRnn
KAV	Kavalur Observatory	12.6	78.8					PnnRnn
RIO	Rio de Janeiro	-22.9	316.8					PnnRnn
ESO	European Southern Obs	-29.3	289.3					PnnRnn
AAT	Siding Spring (AAT)	-31.3	149.1	+			OCT 31 13:39 - OCT 31 14:05	PnnRie
SAAO	So. Afr. Astro. Obs.	-32.4	20.8					PnnRnn
MSO	Mt. Stromlo Observato	-35.3	149.0	++			OCT 31 13:37 - OCT 31 14:06	PnnRie



```

target                : Uranus
target radius (km)   : 25559.00
C/A epoch            : 2030-10-31T13:52:58.260
Event type          : XRt
: No Uranus occs
: Ring occs: topocentric, not geocentric
Observer code       : AAT
Location            : Siding Spring (AAT)
Latitude (deg)      : -31.27703
E. Longitude (deg)  : 149.06608
Altitude (km)       : 1.164
Gaia source ID      : 3416310553102889856
2Mass ID (if available) : 05250674+2316514
ICRS Star Coord at Epoch: 05h 25m 06.78372s +23:16:51.72838s
RUWE (>1.4 is poor) : 1.85
K magnitude          : 12.272
G magnitude          : 15.854
RP magnitude         : 14.804
BP magnitude         : 16.960
DUPflag             : 0
Distance (au)       : 18.439
f0 (km)              : 0.000
g0 (km)              : 0.000
skyplane vel. (km/s) : -15.02
Sun-Target sep (deg) : 135.76
Sun-Moon sep (deg)  : 159.68
B (ring opening deg) : 81.07
PA of pole (deg)    : 25.48
Pole direction: RA (deg): 257.31100
Dec (deg): -15.17500
C/A sky separation (") : 3.707
C/A sky separation (km) : 49578.5
NAIF SPICE kernels  : RAJobs_U111+rgf15.spk
URKALLvl1.spk
urall1.bsp
IAU_URANUS_for_RINGFIT.tpc
vgr2.urall1.bsp
ural61.bsp
vgr2.ural61.bsp
peph.ural60.bsp
earthstns_itrf93_040916.bsp
earth_720101_070426.bpc
earth_200101_990628_predict.bpc
pg3f0000r.bsp
pg490000r.bsp
naif0012.tls
earth_flat_IAU.spk
  
```



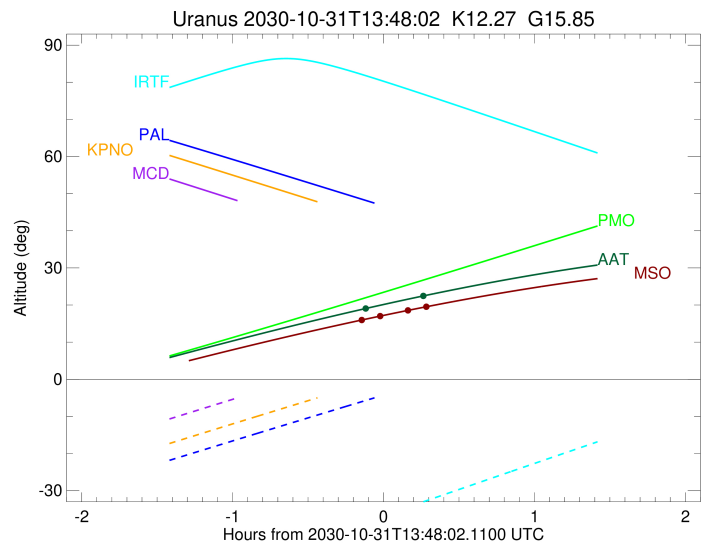
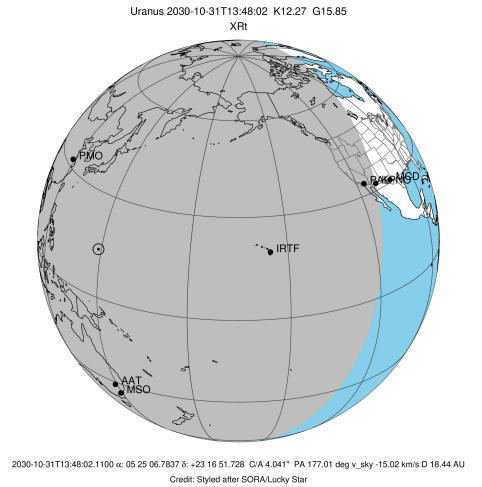
Ring	I/E	UTC	b?	alt	alt-sun	radius	r-dot	lat-geo	lat-geodetic
epsilon	I	2030-10-31T13:39:23.283		18.82	-44.62	51481.90	-3.64		

No planet occultations

epsilon	E	2030-10-31T14:05:45.584		22.72	-44.44	51551.92	3.65		
---------	---	-------------------------	--	-------	--------	----------	------	--	--

```

target                : Uranus
target radius (km)   : 25559.00
C/A epoch            : 2030-10-31T13:52:46.800
Event type          : XRt
: No Uranus occs
: Ring occs: topocentric, not geocentric
Observer code       : MSO
Location            : Mt. Stromlo Observatory
Latitude (deg)      : -35.32000
E. Longitude (deg)  : 149.00833
Altitude (km)       : 0.770
Gaia source ID      : 3416310553102889856
2Mass ID (if available) : 05250674+2316514
ICRS Star Coord at Epoch: 05h 25m 06.78372s +23:16:51.72838s
RUWE (>1.4 is poor) : 1.85
K magnitude         : 12.272
G magnitude         : 15.854
RP magnitude        : 14.804
BP magnitude        : 16.960
DUPflag            : 0
Distance (au)       : 18.439
f0 (km)             : 0.000
g0 (km)             : 0.000
skyplane vel. (km/s) : -15.02
Sun-Target sep (deg) : 135.76
Sun-Moon sep (deg)  : 159.63
B (ring opening deg) : 81.07
PA of pole (deg)    : 25.48
Pole direction: RA (deg): 257.31100
Dec (deg): -15.17500
C/A sky separation (") : 3.686
C/A sky separation (km) : 49298.8
NAIF SPICE kernels  : RAJobs_U111+rgf15.spk
URKALLvl1.spk
urall1.bsp
IAU_URANUS_for_RINGFIT.tpc
vgr2.urall1.bsp
ural61.bsp
vgr2.ural61.bsp
peph.ural60.bsp
earthstns_itrf93_040916.bsp
earth_720101_070426.bpc
earth_200101_990628_predict.bpc
pg3f0000r.bsp
pg490000r.bsp
naif0012.tls
earth_flat_IAU.spk
  
```



Ring	I/E	UTC	b?	alt	alt-sun	radius	r-dot	lat-geo	lat-geodetic
epsilon	I	2030-10-31T13:37:59.319		15.76	-40.58	51476.52	-3.97		
lambda	I	2030-10-31T13:46:51.964		17.04	-40.63	50026.71	-1.51		

No planet occultations

lambda	E	2030-10-31T13:57:35.833		18.53	-40.57	50026.71	1.51		
epsilon	E	2030-10-31T14:06:46.802		19.76	-40.42	51552.91	3.98		