

target : Uranus
 target radius (km) : 25559.00
 C/A epoch : 2034-01-01T04:54:33.900
 Event type : XRT
 : No Uranus occs
 : Ring occs: topocentric, not geocentric
 Gaia source ID : 3425248758003944320
 2Mass ID (if available) : 06142394+2340143

ICRS Star Coord at Epoch: 06h 14m 23.94030s +23:40:14.32832s

RUWE (>1.4 is poor) : 0.96
 K magnitude : 14.680
 G magnitude : 18.031
 RP magnitude : 17.094
 BP magnitude : 18.967
 DUPflag : 0
 Distance (au) : 17.976
 f0 (km) : 0.000
 g0 (km) : 0.000
 skyplane vel. (km/s) : -23.16
 Sun-Target sep (deg) : 172.93
 Sun-Moon sep (deg) : 40.99
 B (ring opening deg) : 72.47
 PA of pole (deg) : 63.97

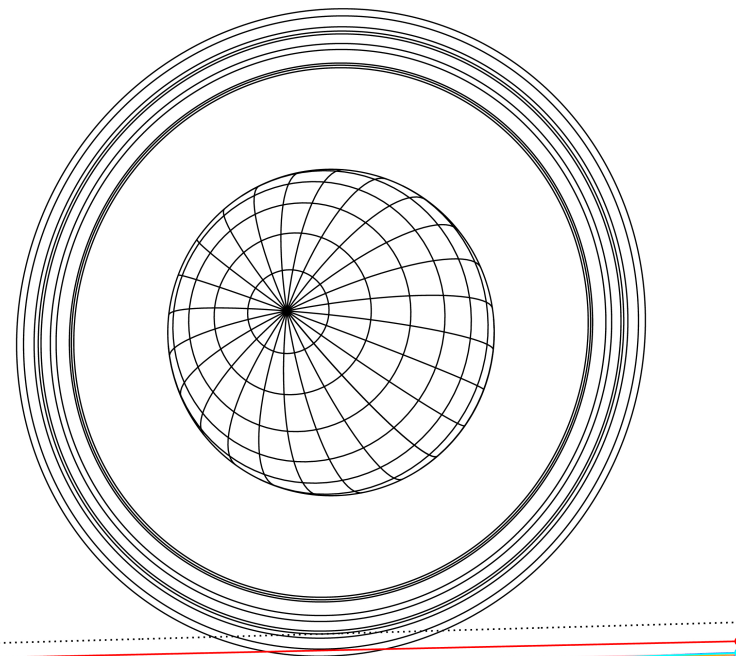
#	a(km)	ring
1	41837.2	6
2	42235.0	5
3	42571.2	4
4	44718.5	alpha
5	45661.1	beta
6	47176.1	eta
7	47626.3	gamma
8	48300.3	delta
9	50026.7	lambda
10	51149.4	epsilon



2034-01-01T04:54:33.9000 a: 06 14 23.9403 s: +23 40 14.328 C/A 4.099° PA 1.60 deg v_sky -23.16 km/s D 17.98 AU
 Credit: Styled after SORA/Lucky Star

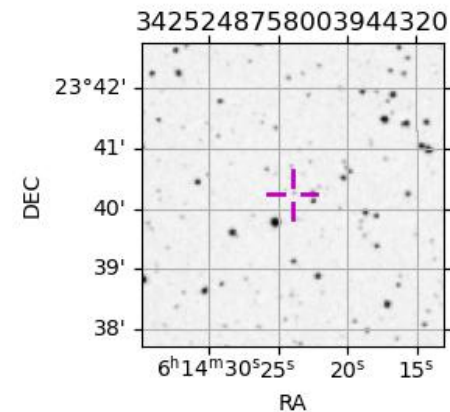
Uranus 2034-01-01T04:54:33 K14.68 G18.03 XRT

PIC
 PAL
 KPNO
 MCD
 TEN
 IRTF



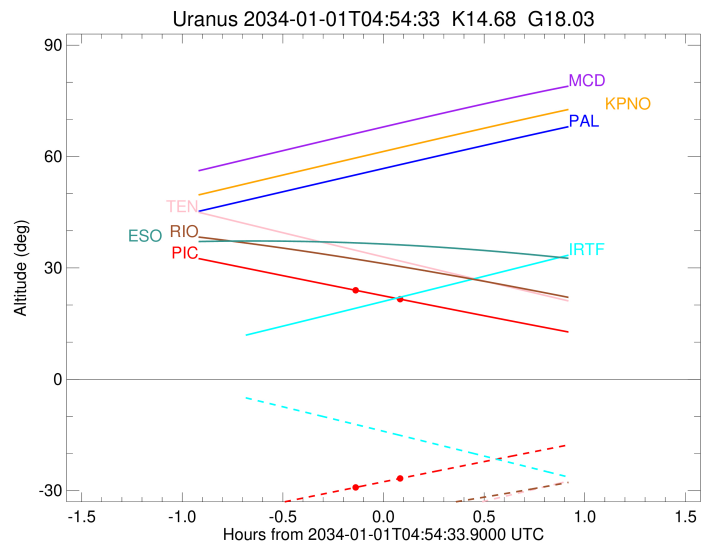
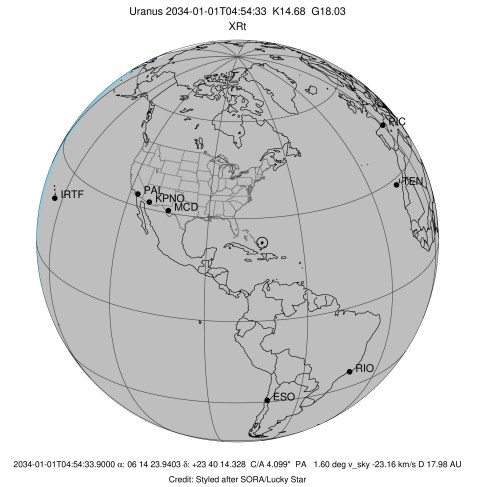
Observable events with sun below -5 deg and altitude above 5 deg unblocked by planet

Obs	Location	lat	Elon	Rings I	Planet	Rings E	Observed Events Interval	OEcode
PIC	Pic du Midi	42.9	0.1	+		+	JAN 01 04:45 - JAN 01 05:00	PnnRie
PAL	Palomar Mt (200")	33.4	243.1					PnnRnn
PMO	Purple Mtn Obs. Nanki	32.1	118.8					PnnRnn
KPNO	Kitt Peak Natl Obs	32.0	248.4					PnnRnn
MCD	McDonald Obs. 2.7m	30.7	256.0					PnnRnn
TEN	Teide Obs./Tenerife	28.3	343.5					PnnRnn
IRTF	Mauna Kea/IRTF	19.8	204.5					PnnRnn
KAV	Kavalur Observatory	12.6	78.8					PnnRnn
RIO	Rio de Janeiro	-22.9	316.8					PnnRnn
ESO	European Southern Obs	-29.3	289.3					PnnRnn
AAT	Siding Spring (AAT)	-31.3	149.1					PnnRnn
SAAO	So. Afr. Astro. Obs.	-32.4	20.8					PnnRnn
MSO	Mt. Stromlo Observato	-35.3	149.0					PnnRnn



```

target                : Uranus
target radius (km)   : 25559.00
C/A epoch            : 2034-01-01T04:51:32.770
Event type          : XRt
: No Uranus occs
: Ring occs: topocentric, not geocentric
Observer code       : PIC
Location            : Pic du Midi
Latitude (deg)      : 42.93656
E. Longitude (deg)  : 0.14231
Altitude (km)       : 2.890
Gaia source ID      : 3425248758003944320
2Mass ID (if available) : 06142394+2340143
ICRS Star Coord at Epoch: 06h 14m 23.94030s +23:40:14.32832s
RUWE (>1.4 is poor) : 0.96
K magnitude          : 14.680
G magnitude          : 18.031
RP magnitude         : 17.094
BP magnitude         : 18.967
DUPflag             : 0
Distance (au)        : 17.976
f0 (km)              : 0.000
g0 (km)              : 0.000
skyplane vel. (km/s) : -23.16
Sun-Target sep (deg) : 172.93
Sun-Moon sep (deg)  : 41.81
B (ring opening deg) : 72.47
PA of pole (deg)    : 63.97
Pole direction: RA (deg): 257.31100
Dec (deg): -15.17500
C/A sky separation (") : 3.817
C/A sky separation (km) : 49758.9
NAIF SPICE kernels  : RAJobs_U111+rgf15.spk
URKALLvl1.spk
urall1.bsp
IAU_URANUS_for_RINGFIT.tpc
vgr2.urall1.bsp
ural61.bsp
vgr2.ural61.bsp
peph.ural60.bsp
earthstns_itrf93_040916.bsp
earth_720101_070426.bpc
earth_200101_990628_predict.bpc
pg3f0000r.bsp
pg490000r.bsp
naif0012.tls
earth_flat_IAU.spk
  
```



Ring	I/E	UTC	b?	alt	alt-sun	radius	r-dot	lat-geo	lat-geodetic
epsilon	I	2034-01-01T04:45:08.110		24.17	-29.34	51493.66	-5.36		

No planet occultations

epsilon	E	2034-01-01T05:00:50.465		21.34	-26.47	51553.13	5.36		
---------	---	-------------------------	--	-------	--------	----------	------	--	--