

target : Uranus
 target radius (km) : 25559.00
 C/A epoch : 2034-04-12T19:39:19.540
 Event type : XRT
 : No Uranus occs
 : Ring occs: topocentric, not geocentric
 Gaia source ID : 3425389559916944512
 2Mass ID (if available) : 06085486+2341330

ICRS Star Coord at Epoch: 06h 08m 54.87079s +23:41:33.06171s

RUWE (>1.4 is poor) : 0.97
 K magnitude : 12.423
 G magnitude : 14.537
 RP magnitude : 13.837
 BP magnitude : 15.072
 DUPflag : 0
 Distance (au) : 19.261
 f0 (km) : 0.000
 g0 (km) : 0.000
 skyplane vel. (km/s) : 16.78
 Sun-Target sep (deg) : 69.55
 Sun-Moon sep (deg) : 148.84
 B (ring opening deg) : 73.57
 PA of pole (deg) : 61.48

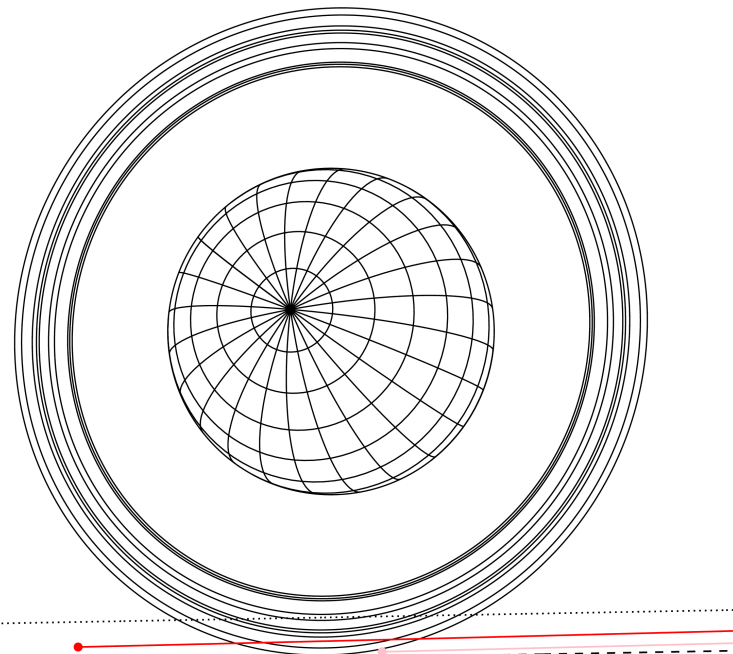
#	a(km)	ring
1	41837.2	6
2	42235.0	5
3	42571.2	4
4	44718.5	alpha
5	45661.1	beta
6	47176.1	eta
7	47626.3	gamma
8	48300.3	delta
9	50026.7	lambda
10	51149.4	epsilon



2034-04-12T19:39:19.5400 α: 06 08 54.8708 δ: +23 41 33.062 C/A 3.654" PA 1.04 deg v_sky +16.78 km/s D 19.26 AU
 Credit: Styled after SORA/Lucky Star

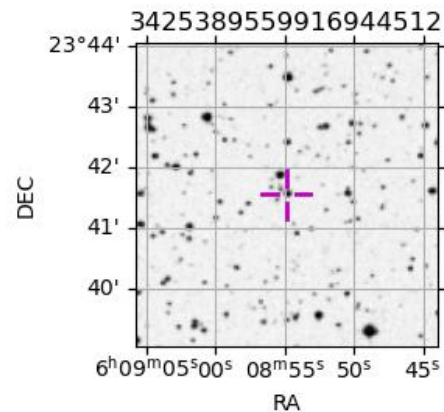
Uranus 2034-04-12T19:39:19 K12.42 G14.54 XRT

PIC
TEN



Observable events with sun below -5 deg and altitude above 5 deg unblocked by planet

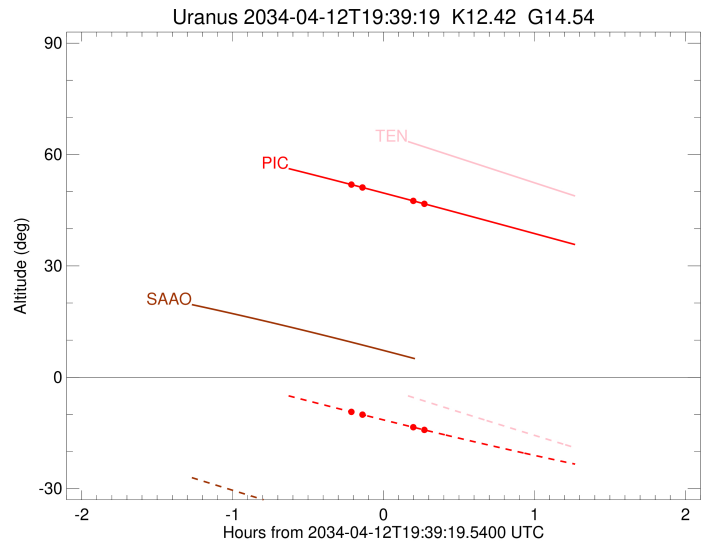
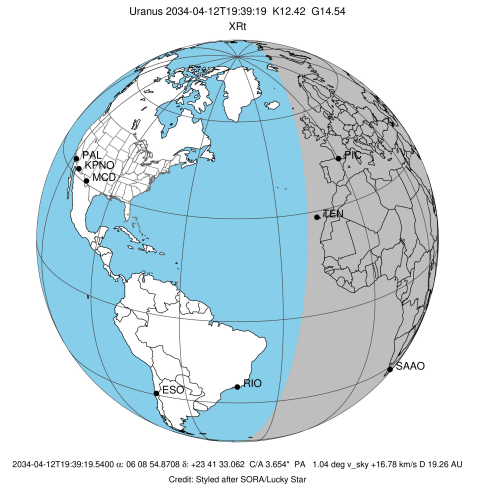
Obs	Location	lat	Elon	Rings I	Planet	Rings E	Observed Events Interval	OEcode
PIC	Pic du Midi	42.9	0.1	++		++	APR 12 19:27 - APR 12 19:55	PnnRie
PAL	Palomar Mt (200")	33.4	243.1					PnnRnn
PMO	Purple Mtn Obs. Nanki	32.1	118.8					PnnRnn
KPNO	Kitt Peak Natl Obs	32.0	248.4					PnnRnn
MCD	McDonald Obs. 2.7m	30.7	256.0					PnnRnn
TEN	Teide Obs./Tenerife	28.3	343.5					PnnRnn
IRTF	Mauna Kea/IRTF	19.8	204.5					PnnRnn
KAV	Kavalur Observatory	12.6	78.8					PnnRnn
RIO	Rio de Janeiro	-22.9	316.8					PnnRnn
ESO	European Southern Obs	-29.3	289.3					PnnRnn
AAT	Siding Spring (AAT)	-31.3	149.1					PnnRnn
SAAO	So. Afr. Astro. Obs.	-32.4	20.8					PnnRnn
MSO	Mt. Stromlo Observato	-35.3	149.0					PnnRnn



3425389559916944512

```

target                : Uranus
target radius (km)   : 25559.00
C/A epoch            : 2034-04-12T19:42:48.070
Event type          : XRt
                    : No Uranus occs
                    : Ring occs: topocentric, not geocentric
Observer code       : PIC
Location            : Pic du Midi
Latitude (deg)      : 42.93656
E. Longitude (deg)  : 0.14231
Altitude (km)       : 2.890
Gaia source ID      : 3425389559916944512
2Mass ID (if available) : 06085486+2341330
ICRS Star Coord at Epoch: 06h 08m 54.87079s +23:41:33.06171s
RUWE (>1.4 is poor) : 0.97
K magnitude         : 12.423
G magnitude         : 14.537
RP magnitude        : 13.837
BP magnitude        : 15.072
DUPflag            : 0
Distance (au)       : 19.262
f0 (km)             : 0.000
g0 (km)             : 0.000
skyplane vel. (km/s) : 16.78
Sun-Target sep (deg) : 69.55
Sun-Moon sep (deg)  : 148.87
B (ring opening deg) : 73.57
PA of pole (deg)    : 61.48
Pole direction: RA (deg): 257.31100
Dec (deg): -15.17500
C/A sky separation (") : 3.469
C/A sky separation (km) : 48458.2
NAIF SPICE kernels  : RAJobs_U111+rgf15.spk
URKALLvl1.spk
urall11.bsp
IAU_URANUS_for_RINGFIT.tpc
vgr2.urall11.bsp
ural61.bsp
vgr2.ural61.bsp
peph.ural60.bsp
earthstns_itrf93_040916.bsp
earth_720101_070426.bpc
earth_200101_990628_predict.bpc
pg3f0000r.bsp
pg490000r.bsp
naif0012.tls
earth_flat_IAU.spk
  
```



Ring	I/E	UTC	b?	alt	alt-sun	radius	r-dot	lat-geo	lat-geodetic
epsilon	I	2034-04-12T19:27:36.355		51.72	-9.50	50863.77	-4.71		
lambda	I	2034-04-12T19:31:02.567		51.11	-10.09	50026.71	-3.50		

No planet occultations

lambda	E	2034-04-12T19:51:05.957		47.53	-13.44	50026.71	3.50		
epsilon	E	2034-04-12T19:55:13.321		46.78	-14.12	51060.49	4.72		