

target : Uranus
 target radius (km) : 25559.00
 C/A epoch : 2034-04-23T15:28:52.770
 Event type : PgtRgt
 : Uranus occs: geocentric, topocentric
 : Ring occs: geocentric, topocentric
 Gaia source ID : 3425434296294025856
 2Mass ID (if available) : 06102819+2341132

Uranus 2034-04-23T15:28:52 K14.48 G18.38 PgtRgt

ICRS Star Coord at Epoch: 06h 10m 28.15913s +23:41:13.18314s

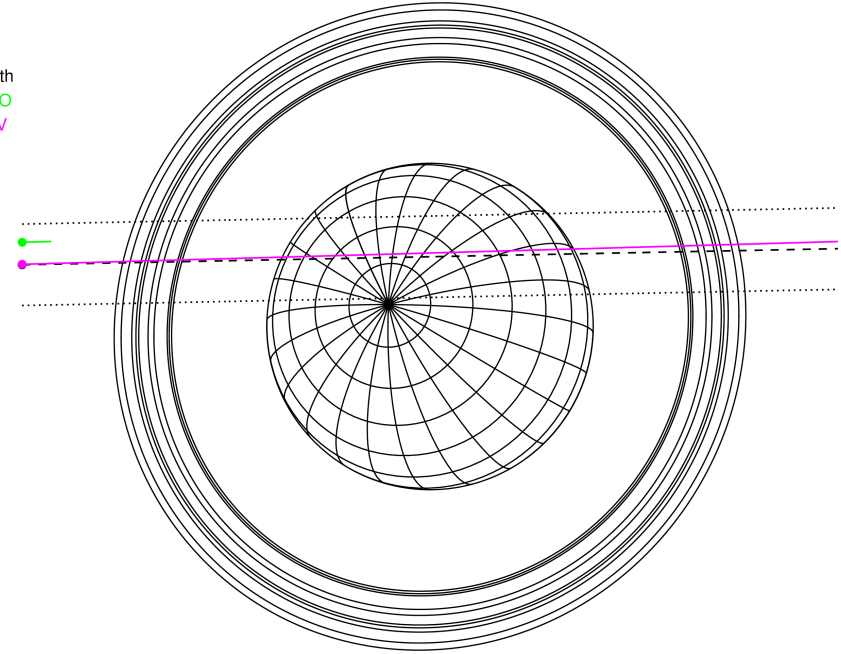
RUWE (>1.4 is poor) : 1.06
 K magnitude : 14.481
 G magnitude : 18.382
 RP magnitude : 17.132
 BP magnitude : 20.039
 DUPflag : 0
 Distance (au) : 19.426
 f0 (km) : 0.000
 g0 (km) : 0.000
 skyplane vel. (km/s) : 21.59
 Sun-Target sep (deg) : 59.32
 Sun-Moon sep (deg) : 9.34
 B (ring opening deg) : 73.26
 PA of pole (deg) : 62.21

Uranus 2034-04-23T15:28:52 K14.48 G18.38
 PgtRgt



2034-04-23T15:28:52.7700 ex: 06 10 28.15913 s: +23 41 13.183 C/A 0.782° PA 181.13 deg v_sky +21.59 km/s D 19.43 AU
 Credit: Styled after SORA/Lucky Star

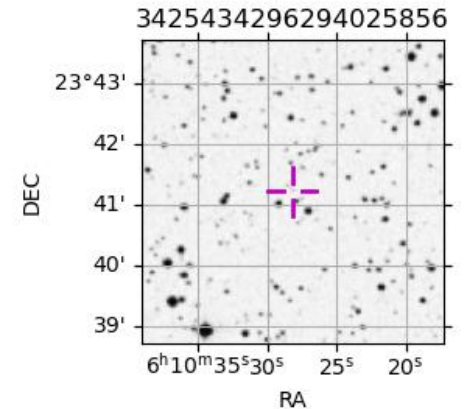
Earth
 PMO
 KAV



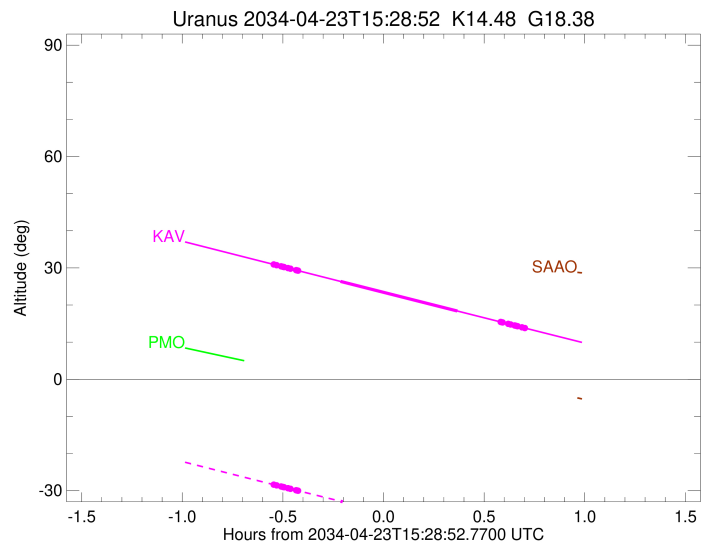
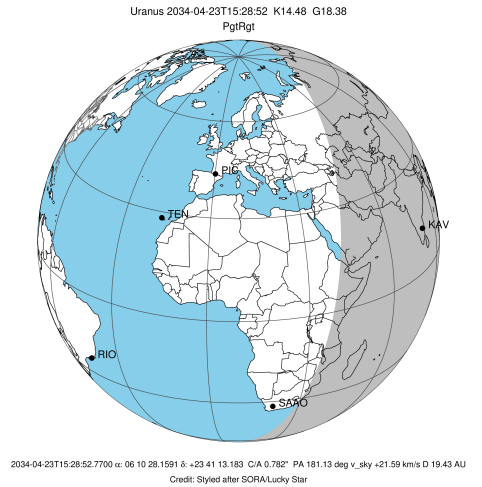
#	a(km)	ring
1	41837.2	6
2	42235.0	5
3	42571.2	4
4	44718.5	alpha
5	45661.1	beta
6	47176.1	eta
7	47626.3	gamma
8	48300.3	delta
9	50026.7	lambda
10	51149.4	epsilon

Observable events with sun below -5 deg and altitude above 5 deg unblocked by planet

Obs	Location	lat	Elon	Rings I	Planet	Rings E	Observed Events Interval	OEcode
PIC	Pic du Midi	42.9	0.1					PnnRnn
PAL	Palomar Mt (200")	33.4	243.1					PnnRnn
PMO	Purple Mtn Obs. Nanki	32.1	118.8					PnnRnn
KPNO	Kitt Peak Natl Obs	32.0	248.4					PnnRnn
MCD	McDonald Obs. 2.7m	30.7	256.0					PnnRnn
TEN	Teide Obs./Tenerife	28.3	343.5					PnnRnn
IRTF	Mauna Kea/IRTF	19.8	204.5					PnnRnn
KAV	Kavalur Observatory	12.6	78.8	+++++	+ +	+++++	APR 23 14:56 - APR 23 16:11	PieRie
RIO	Rio de Janeiro	-22.9	316.8					PnnRnn
ESO	European Southern Obs	-29.3	289.3					PnnRnn
AAT	Siding Spring (AAT)	-31.3	149.1					PnnRnn
SAAO	So. Afr. Astro. Obs.	-32.4	20.8					PnnRnn
MSO	Mt. Stromlo Observato	-35.3	149.0					PnnRnn



target : Uranus
 target radius (km) : 25559.00
 C/A epoch : 2034-04-23T15:33:20.160
 Event type : PgtRgt
 : Uranus occs: geocentric, topocentric
 : Ring occs: geocentric, topocentric
 Observer code : KAV
 Location : Kavalur Observatory
 Latitude (deg) : 12.57556
 E. Longitude (deg) : 78.83167
 Altitude (km) : 0.722
 Gaia source ID : 3425434296294025856
 2Mass ID (if available) : 06102819+2341132
 ICRS Star Coord at Epoch: 06h 10m 28.15913s +23:41:13.18314s
 RUWE (>1.4 is poor) : 1.06
 K magnitude : 14.481
 G magnitude : 18.382
 RP magnitude : 17.132
 BP magnitude : 20.039
 DUPflag : 0
 Distance (au) : 19.426
 f0 (km) : 0.000
 g0 (km) : 0.000
 skyplane vel. (km/s) : 21.59
 Sun-Target sep (deg) : 59.32
 Sun-Moon sep (deg) : 8.74
 B (ring opening deg) : 73.26
 PA of pole (deg) : 62.21
 Pole direction: RA (deg): 257.31100
 Dec (deg): -15.17500
 C/A sky separation (") : 0.816
 C/A sky separation (km) : 11501.8
 NAIF SPICE kernels : RAJobs_U111+rgf15.spk
 URKALLvl.spk
 ura111.bsp
 IAU_URANUS_for_RINGFIT.tpc
 vgr2.ura111.bsp
 ura161.bsp
 vgr2.ura161.bsp
 peph.ura160.bsp
 earthstns_itrf93_040916.bsp
 earth_720101_070426.bpc
 earth_200101_990628_predict.bpc
 pg3f0000r.bsp
 pg490000r.bsp
 naif0012.tls
 earth_flat_IAU.spk



Ring	I/E	UTC	b?	alt	alt-sun	radius	r-dot	lat-geo	lat-geodetic
epsilon	I	2034-04-23T14:56:20.314		30.89	-28.43	50923.55	-21.54		
lambda	I	2034-04-23T14:57:02.039		30.73	-28.59	50026.71	-21.48		
delta	I	2034-04-23T14:58:22.474		30.42	-28.89	48300.35	-21.44		
gamma	I	2034-04-23T14:58:53.696		30.30	-29.01	47631.17	-21.42		
eta	I	2034-04-23T14:59:14.943		30.22	-29.09	47176.12	-21.41		
beta	I	2034-04-23T15:00:26.380		29.94	-29.35	45647.65	-21.36		
alpha	I	2034-04-23T15:01:11.224		29.77	-29.52	44694.00	-21.34		
4	I	2034-04-23T15:02:48.588		29.40	-29.89	42615.91	-21.26		
5	I	2034-04-23T15:03:08.331		29.32	-29.96	42186.98	-21.23		
6	I	2034-04-23T15:03:24.251		29.26	-30.02	41848.47	-21.23		
Uranus	I	2034-04-23T15:16:03.258		26.36	-32.85	25022.77		16.73	17.47
Uranus	E	2034-04-23T15:50:54.482		18.38	-40.46	25390.32		-9.19	-9.62
6	E	2034-04-23T16:03:49.374		15.44	-43.18	41849.48	21.36		
5	E	2034-04-23T16:04:07.690		15.37	-43.25	42241.66	21.36		
4	E	2034-04-23T16:04:21.011		15.32	-43.29	42537.21	21.39		
alpha	E	2034-04-23T16:06:04.281		14.93	-43.65	44751.47	21.48		
beta	E	2034-04-23T16:06:46.965		14.76	-43.80	45665.57	21.51		
eta	E	2034-04-23T16:07:57.073		14.50	-44.04	47176.12	21.56		
gamma	E	2034-04-23T16:08:17.790		14.42	-44.12	47622.91	21.57		
delta	E	2034-04-23T16:08:49.175		14.30	-44.22	48300.35	21.59		
lambda	E	2034-04-23T16:10:09.028		14.00	-44.50	50026.71	21.64		
epsilon	E	2034-04-23T16:11:16.981		13.74	-44.73	51498.72	21.70		