

target : Uranus  
 target radius (km) : 25559.00  
 C/A epoch : 2034-05-08T18:50:17.410  
 Event type : XRg  
 : No Uranus occs  
 : Ring occs: geocentric, not topocentric  
 Gaia source ID : 3425256862608454144  
 2Mass ID (if available) : 06131327+2340215

ICRS Star Coord at Epoch: 06h 13m 13.24376s +23:40:20.94348s

RUWE (>1.4 is poor) : 1.08  
 K magnitude : 14.461  
 G magnitude : 18.524  
 RP magnitude : 17.565  
 BP magnitude : 19.440  
 DUPflag : 0  
 Distance (au) : 19.627  
 f0 (km) : 0.000  
 g0 (km) : 0.000  
 skyplane vel. (km/s) : 27.35  
 Sun-Target sep (deg) : 45.25  
 Sun-Moon sep (deg) : 165.82  
 B (ring opening deg) : 72.71  
 PA of pole (deg) : 63.47

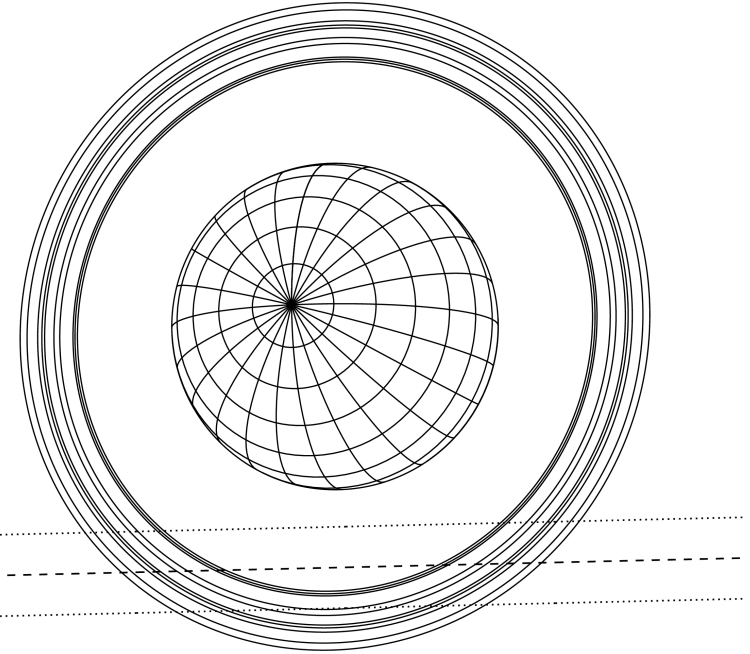
#	a(km)	ring
1	41837.2	6
2	42235.0	5
3	42571.2	4
4	44718.5	alpha
5	45661.1	beta
6	47176.1	eta
7	47626.3	gamma
8	48300.3	delta
9	50026.7	lambda
10	51149.4	epsilon



2034-05-08T18:50:17.4100 α: 06 13 13.2438 δ: +23 40 20.943 C/A 2.645° PA 1.34 deg v\_sky +27.35 km/s D 19.63 AU  
 Credit: Styled after SORA/Lucky Star

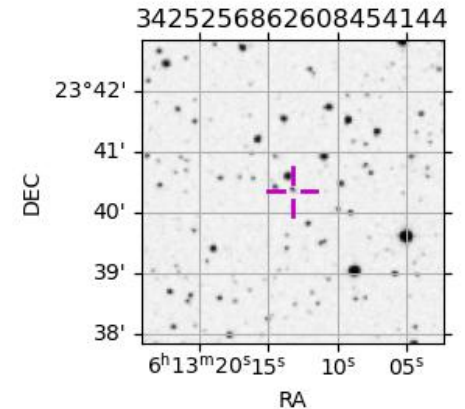
Uranus 2034-05-08T18:50:17 K14.46 G18.52 XRg

Earth  
 SAAO



Observable events with sun below -5 deg and altitude above 5 deg unblocked by planet

Obs	Location	lat	Elon	Rings I	Planet	Rings E	Observed Events Interval	OEcode
PIC	Pic du Midi	42.9	0.1					PnnRnn
PAL	Palomar Mt (200")	33.4	243.1					PnnRnn
PMO	Purple Mtn Obs. Nanki	32.1	118.8					PnnRnn
KPNO	Kitt Peak Natl Obs	32.0	248.4					PnnRnn
MCD	McDonald Obs. 2.7m	30.7	256.0					PnnRnn
TEN	Teide Obs./Tenerife	28.3	343.5					PnnRnn
IRTF	Mauna Kea/IRTF	19.8	204.5					PnnRnn
KAV	Kavalur Observatory	12.6	78.8					PnnRnn
RIO	Rio de Janeiro	-22.9	316.8					PnnRnn
ESO	European Southern Obs	-29.3	289.3					PnnRnn
AAT	Siding Spring (AAT)	-31.3	149.1					PnnRnn
SAAO	So. Afr. Astro. Obs.	-32.4	20.8					PnnRnn
MSO	Mt. Stromlo Observato	-35.3	149.0					PnnRnn



3425256862608454144