

target : Uranus
 target radius (km) : 25559.00
 C/A epoch : 2036-05-07T21:55:02.690
 Event type : XRT
 : No Uranus occs
 : Ring occs: topocentric, not geocentric
 Gaia source ID : 3379576144497841664
 2Mass ID (if available) : 06502606+2318295

ICRS Star Coord at Epoch: 06h 50m 26.06492s +23:18:29.47367s

RUWE (>1.4 is poor) : 0.96
 K magnitude : 14.862
 G magnitude : 16.852
 RP magnitude : 16.228
 BP magnitude : 17.315
 DUPflag : 0
 Distance (au) : 19.378
 f0 (km) : 0.000
 g0 (km) : 0.000
 skyplane vel. (km/s) : 23.87
 Sun-Target sep (deg) : 54.16
 Sun-Moon sep (deg) : 95.88
 B (ring opening deg) : 64.82
 PA of pole (deg) : 75.74

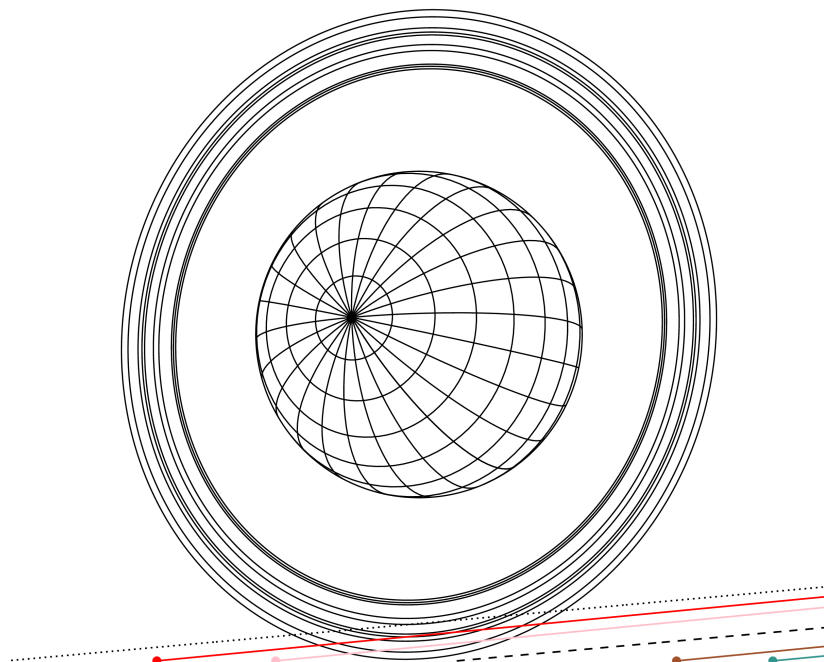
#	a(km)	ring
1	41837.2	6
2	42235.0	5
3	42571.2	4
4	44718.5	alpha
5	45661.1	beta
6	47176.1	eta
7	47626.3	gamma
8	48300.3	delta
9	50026.7	lambda
10	51149.4	epsilon



2036-05-07T21:55:02.6900 α: 06 50 26.0649 α: +23 18 29.474 C/A 3.653° PA 5.16 deg v_sky +23.87 km/s D 19.38 AU
 Credit: Styled after SORA/Lucky Star

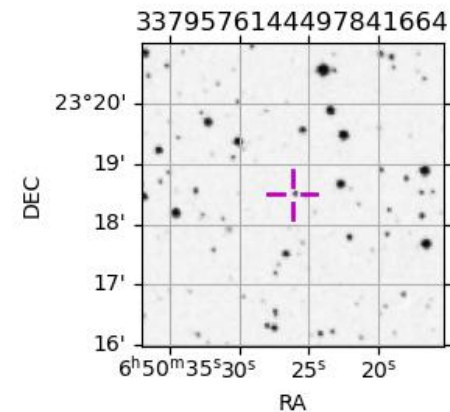
PIC
 TEN
 RIO
 ESO

Uranus 2036-05-07T21:55:02 K14.86 G16.85 XRT

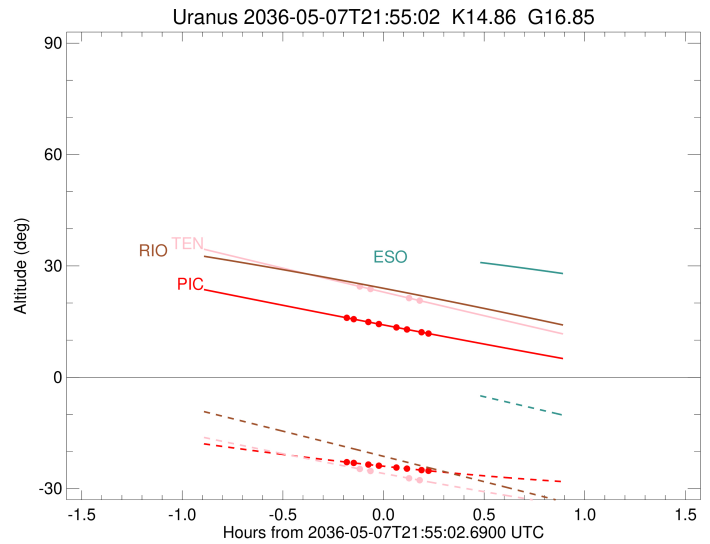
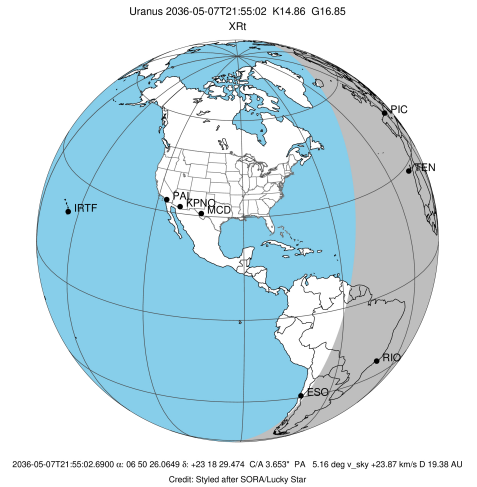


Observable events with sun below -5 deg and altitude above 5 deg unblocked by planet

Obs	Location	lat	Elon	Rings I	Planet	Rings E	Observed Events Interval	OEncode
PIC	Pic du Midi	42.9	0.1	++++		++++	MAY 07 21:44 - MAY 07 22:08	PnnRie
PAL	Palomar Mt (200")	33.4	243.1					PnnRnn
PMO	Purple Mtn Obs. Nanki	32.1	118.8					PnnRnn
KPNO	Kitt Peak Natl Obs	32.0	248.4					PnnRnn
MCD	McDonald Obs. 2.7m	30.7	256.0					PnnRnn
TEN	Teide Obs./Tenerife	28.3	343.5	++		++	MAY 07 21:47 - MAY 07 22:06	PnnRie
IRTF	Mauna Kea/IRTF	19.8	204.5					PnnRnn
KAV	Kavalur Observatory	12.6	78.8					PnnRnn
RIO	Rio de Janeiro	-22.9	316.8					PnnRnn
ESO	European Southern Obs	-29.3	289.3					PnnRnn
AAT	Siding Spring (AAT)	-31.3	149.1					PnnRnn
SAAO	So. Afr. Astro. Obs.	-32.4	20.8					PnnRnn
MSO	Mt. Stromlo Observato	-35.3	149.0					PnnRnn



target : Uranus
 target radius (km) : 25559.00
 C/A epoch : 2036-05-07T21:58:12.500
 Event type : XRt
 : No Uranus occs
 : Ring occs: topocentric, not geocentric
 Observer code : PIC
 Location : Pic du Midi
 Latitude (deg) : 42.93656
 E. Longitude (deg) : 0.14231
 Altitude (km) : 2.890
 Gaia source ID : 3379576144497841664
 2Mass ID (if available) : 06502606+2318295
 ICRS Star Coord at Epoch: 06h 50m 26.06492s +23:18:29.47367s
 RUWE (>1.4 is poor) : 0.96
 K magnitude : 14.862
 G magnitude : 16.852
 RP magnitude : 16.228
 BP magnitude : 17.315
 DUPflag : 0
 Distance (au) : 19.378
 f0 (km) : 0.000
 g0 (km) : 0.000
 skyplane vel. (km/s) : 23.87
 Sun-Target sep (deg) : 54.16
 Sun-Moon sep (deg) : 96.19
 B (ring opening deg) : 64.82
 PA of pole (deg) : 75.74
 Pole direction: RA (deg): 257.31100
 Dec (deg): -15.17500
 C/A sky separation (") : 3.341
 C/A sky separation (km) : 46955.6
 NAIF SPICE kernels : RAJobs_U111+rgf15.spk
 URKALLvl.spk
 ura111.bsp
 IAU_URANUS_for_RINGFIT.tpc
 vgr2.ura111.bsp
 ura161.bsp
 vgr2.ura161.bsp
 peph.ura160.bsp
 earthstns_itrfr93_040916.bsp
 earth_720101_070426.bpc
 earth_200101_990628_predict.bpc
 pg3f0000r.bsp
 pg490000r.bsp
 naif0012.tls
 earth_flat_IAU.spk

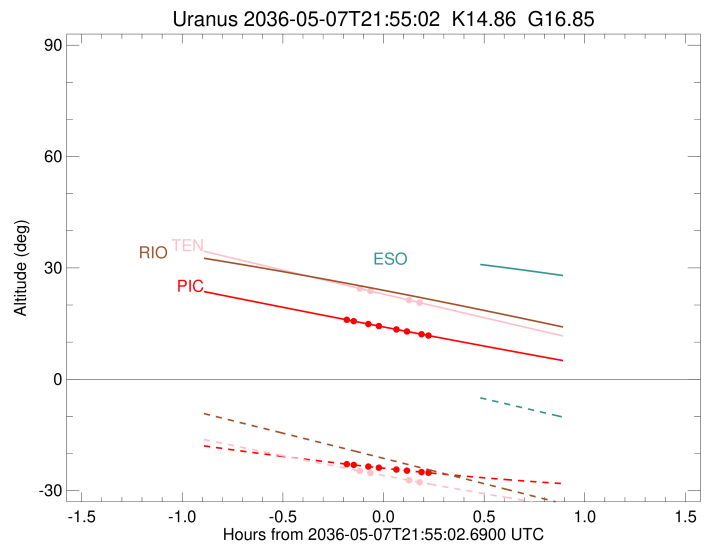
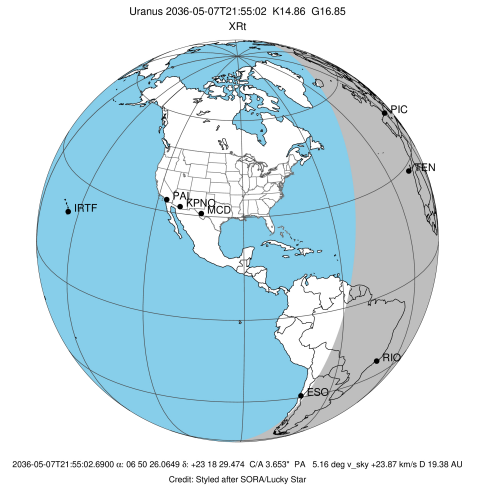


Ring	I/E	UTC	b?	alt	alt-sun	radius	r-dot	lat-geo	lat-geodetic
epsilon	I	2036-05-07T21:44:08.893		16.01	-22.87	51135.42	-9.91		
lambda	I	2036-05-07T21:46:12.174		15.64	-23.08	50026.71	-8.25		
delta	I	2036-05-07T21:50:34.663		14.88	-23.52	48300.35	-4.84		
gamma	I	2036-05-07T21:53:47.506		14.32	-23.84	47625.04	-2.15		

No planet occultations

gamma	E	2036-05-07T21:58:46.780		13.45	-24.31	47625.90	2.15		
delta	E	2036-05-07T22:01:59.105		12.89	-24.61	48300.35	4.85		
lambda	E	2036-05-07T22:06:21.290		12.14	-25.01	50026.71	8.27		
epsilon	E	2036-05-07T22:08:53.528		11.70	-25.23	51424.16	9.93		

target : Uranus
 target radius (km) : 25559.00
 C/A epoch : 2036-05-07T21:58:56.010
 Event type : XRt
 : No Uranus occs
 : Ring occs: topocentric, not geocentric
 Observer code : TEN
 Location : Teide Obs./Tenerife
 Latitude (deg) : 28.30050
 E. Longitude (deg) : 343.48909
 Altitude (km) : 2.395
 Gaia source ID : 3379576144497841664
 2Mass ID (if available) : 06502606+2318295
 ICRS Star Coord at Epoch: 06h 50m 26.06492s +23:18:29.47367s
 RUWE (>1.4 is poor) : 0.96
 K magnitude : 14.862
 G magnitude : 16.852
 RP magnitude : 16.228
 BP magnitude : 17.315
 DUPflag : 0
 Distance (au) : 19.378
 f0 (km) : 0.000
 g0 (km) : 0.000
 skyplane vel. (km/s) : 23.87
 Sun-Target sep (deg) : 54.16
 Sun-Moon sep (deg) : 96.35
 B (ring opening deg) : 64.82
 PA of pole (deg) : 75.74
 Pole direction: RA (deg): 257.31100
 Dec (deg): -15.17500
 C/A sky separation (") : 3.465
 C/A sky separation (km) : 48699.0
 NAIF SPICE kernels : RAJobs_U111+rgf15.spk
 URKALLvl.spk
 ura111.bsp
 IAU_URANUS_for_RINGFIT.tpc
 vgr2.ura111.bsp
 ura161.bsp
 vgr2.ura161.bsp
 peph.ura160.bsp
 earthstns_itrf93_040916.bsp
 earth_720101_070426.bpc
 earth_200101_990628_predict.bpc
 pg3f0000r.bsp
 pg490000r.bsp
 naif0012.tls
 earth_flat_IAU.spk



Ring	I/E	UTC	b?	alt	alt-sun	radius	r-dot	lat-geo	lat-geodetic
epsilon	I	2036-05-07T21:47:57.261		24.46	-24.70	51178.26	-7.30		
lambda	I	2036-05-07T21:51:13.143		23.76	-25.26	50026.71	-4.62		

No planet occultations

lambda	E	2036-05-07T22:02:36.956		21.33	-27.20	50026.71	4.63		
epsilon	E	2036-05-07T22:06:21.888		20.54	-27.82	51391.98	7.32		