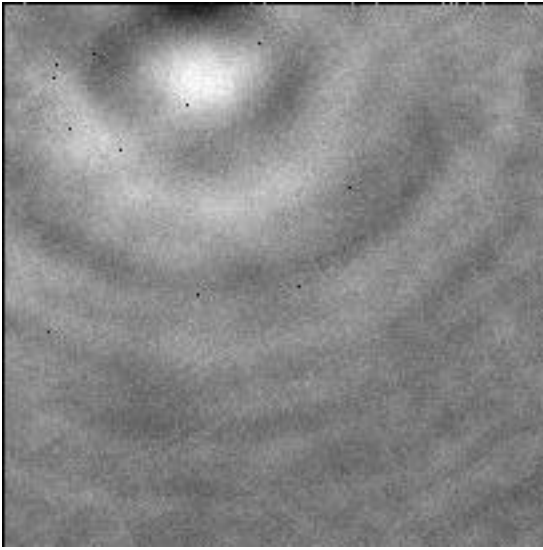
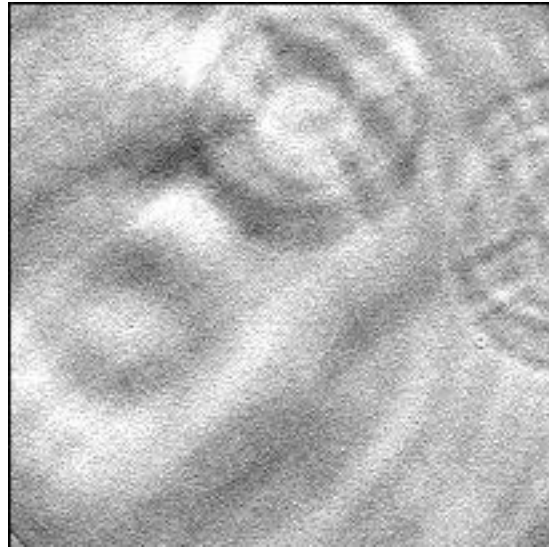


2.13 NAC APERTURE GHOST IMAGES

Artifacts appear in some of the radiometrically corrected images (at the 1% or less level) which are difficult or impossible to see in raw data files. After correction some filters show what appear to be images of the aperture (spider hub) caused by reflections off first the CCD and then off one or more optical surfaces back to the CCD. The surfaces in question are probably the filters, but multiple reflections of different size may mean various surfaces. Many of the artifacts are double indicating their presence in the Slope files (because they are in the Light Transfer data) and in the raw data, but with the locations offset slightly. Almost all the corrected images show some sort of reflections.



116974 - reflections



116985 - reflections