

2.17 DUST PARTICLE OBSERVED TO SHIFT ON NAC

The intense dust spot shadow near the right side of images normally gets removed in the corrections process because it is in the same place in the raw data as in the Slope files. However, cases have been found where the spot has shifted in the line direction by less than a pixel. It is highly likely that the location of the spot was shifted at launch. Figure 2.17-1 displays a small area of the ratio of two consecutive raw images which shows that a shift occurred between their exposures (15 minutes apart).

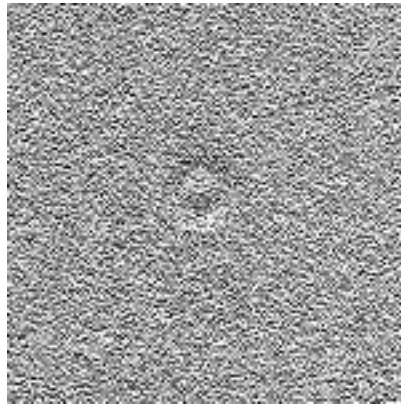


Figure 2.17-1 - Ratio of Image # 116978 to # 116979